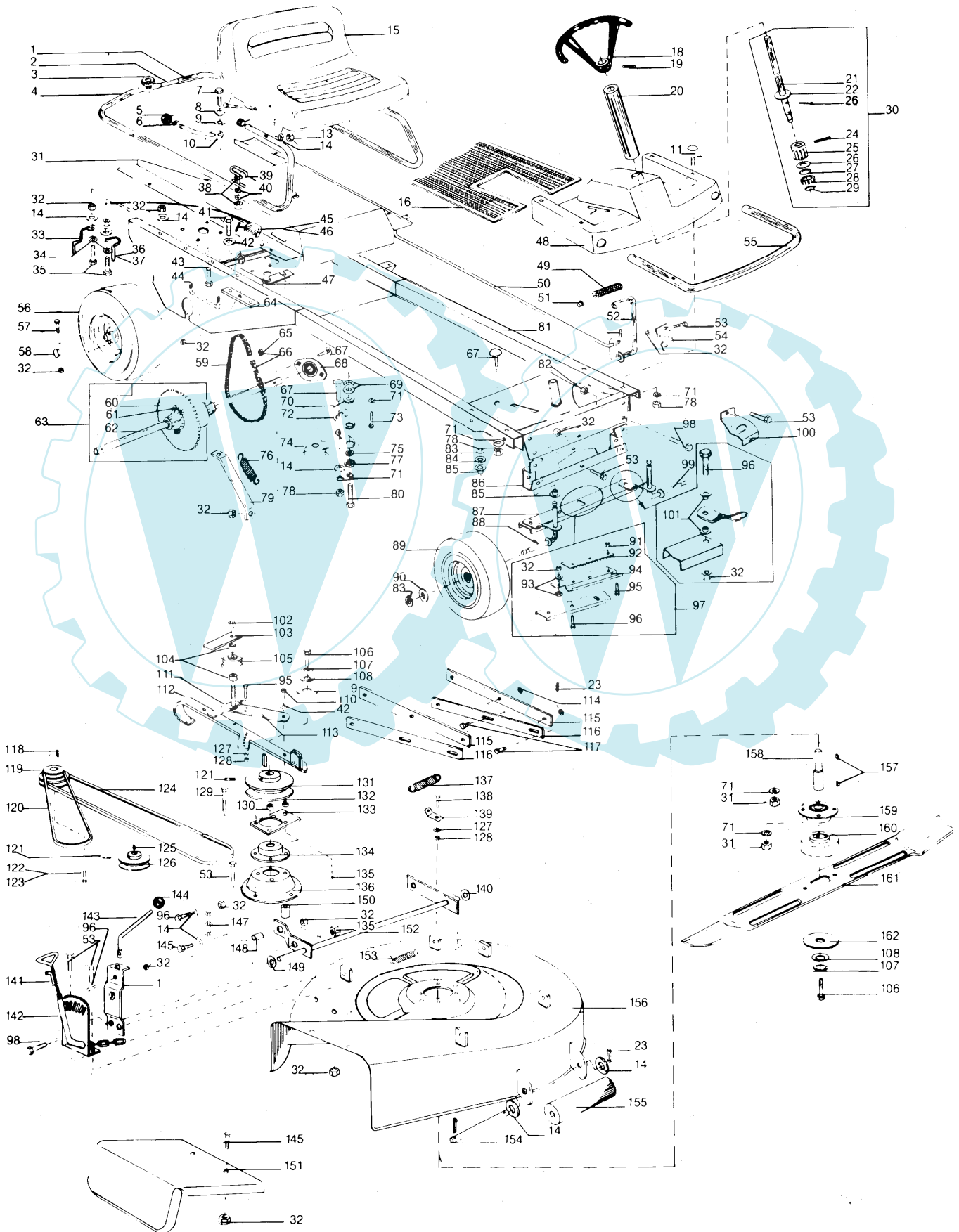




DR 9647352
DRS 9647353



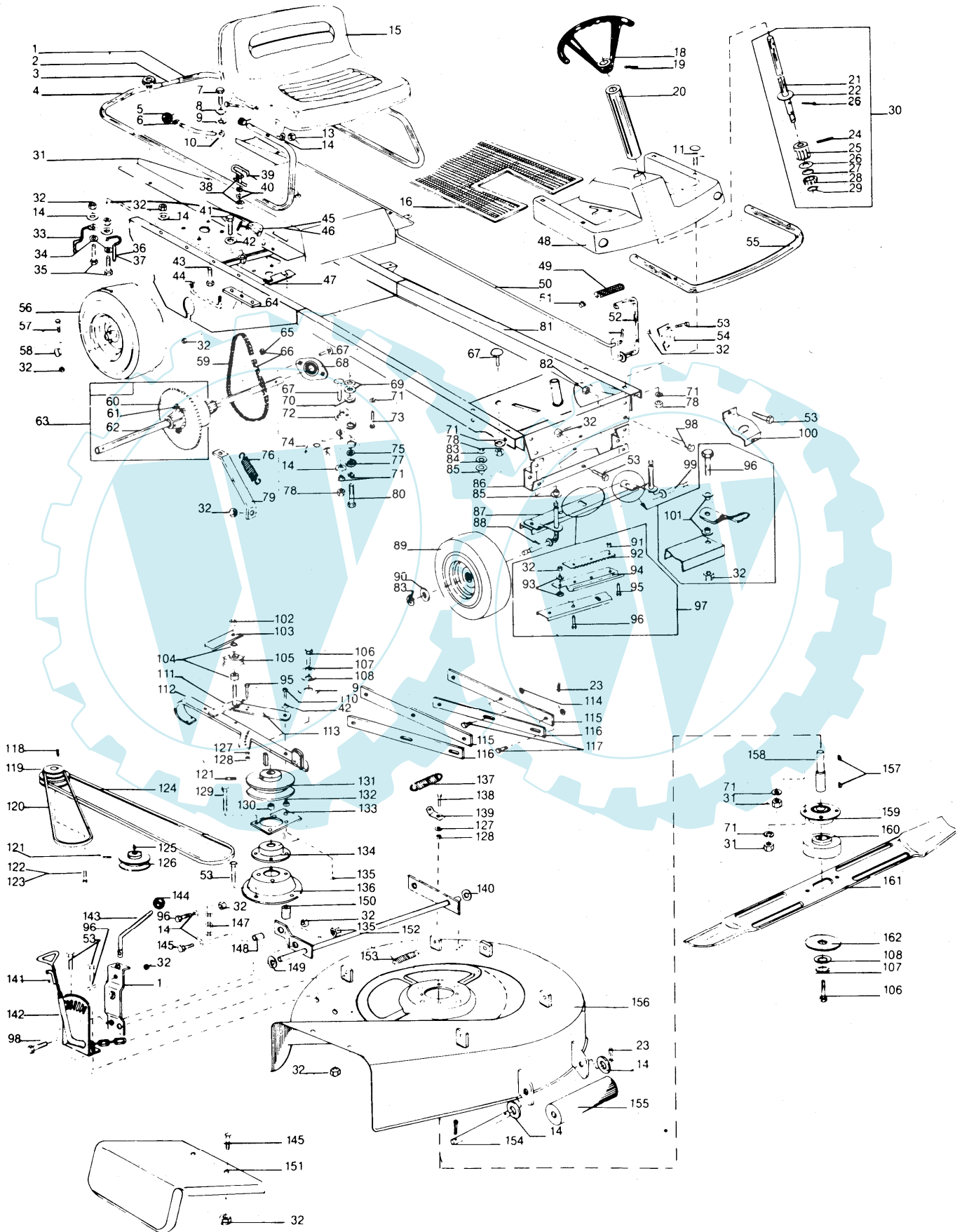
Flymo**DR 9647352**
DRS 9647353

KEY No.	PART No.	DESCRIPTION	QUANTITY	COMMENTS/ APPLICATION	KEY No.	PART No.	DESCRIPTION	QUANTITY	COMMENTS/ APPLICATION
1	515105580-00/2	SUPPORT SEAT LEFT HAND	1		51	515116040-00/4	LOCK WASHER	1	
2	515105338-00/5	TUBE	1		52	515213570-00/2	PEDAL	1	
3	515127546-00/7	NUT	1		53	515701816-00/8	BOLT	6	
4	515105581-00/0	SUPPORT SEAT RIGHT HAND	1		54	515139490-00/4	SPACER	1	
5	515104141-00/4	KNOB	1		55	515105427-00/6	BUMPER	1	
6	515118134-00/3	CLIP	1		56	515202596-00/0	WHEEL COMPLETE REAR	2	
7	515123187-00/4	SCREW	1		57	515700845-00/8	SCREW	2	
8	515139754-00/3	WASHER (SPACER)	1		58	515104181-00/0	PLUG	2	
9	515118334-00/9	SPRING	1		59	515113034-00/0	CHAIN	1	
10	515213373-00/1	GEAR LEVER	1		60	515111095-00/3	SPROCKET	1	
11	515711850-00/5	BOLT LOCK	5		61	515127010-00/4	NUT	4	
12	515104188-00/5	CAP	2		62	515210013-00/6	DIFFERENTIAL PEERLES	1	
13	515762008-00/8	NUT NYLOCK	1		63	515211486-00/3	DIFFERENTIAL	1	
14	515768012-00/4	WASHER BASE	5		64	515135234-00/0	BRACKET	1	
15	515213079-00/4	SEAT	1		65	515113036-00/5	SPLIT LINK	1	
16	515147042-00/3	RUBBER MAT	1		66	515211485-00/5	CHAIN C/W LINK	1	
18	515104477-00/2	STEERING WHEEL 13"	1		67	515711820-00/8	SCREW LOCK	4	
19	515786645-00/9	PIN	1		68	515109051-00/0	FLANGE BEARING	2	
20	515213376-00/4	BEARING	1		69	515796012-00/0	WASHER	2	
21	515107240-00/1	STEERING SHAFT	1		70	515139764-00/2	WASHER	1	
22	515796023-00/7	WASHER	1		71	515772009-00/4	WASHER SPRING	6	
23	515780041-00/7	COTTER PIN	5		72	515139548-00/9	CONTROL ARM	1	
24	515786636-00/8	PIN	1		73	515123118-00/9	SCREW	1	
25	515111099-00/5	STEERING PINION	1		74	515213383-00/0	TENSION ROLLER	1	
26	515796020-00/3	WASHER	1		75	515796019-00/5	WASHER	1	
27	515768014-00/0	WASHER	1		76	515118258-00/0	SPRING	1	
28	515109033-00/8	BEARING	1		77	515139764-00/2	WASHER	1	
29	515116052-00/9	SNAP RING	1		78	515756008-00/6	NUT LOCK	4	
30	515211487-00/1	STEERING SHAFT ASSY	1		79	515139540-00/6	ROD	1	
31	515111099-00/5	STEERING PINION	1		80	515123120-00/5	SCREW	1	
32	515763008-00/7	NUT LOCK	16		82	515763010-00/3	NUT	1	
33	515137299-00/1	BELT GUIDE	1		83	515116035-00/4	DUST COVER	3	
34	515796024-00/5	WASHER	2		84	515116038-00/8	SNAP RING	1	
35	515700845-00/8	SCREW	2		85	515108051-00/1	BEARING BRONZE	2	
36	515137296-00/7	BELT GUIDE (DR)	1		86	515213398-00/8	CHASSIS	1	
37	515137297-00/5	BELT GUIDE (DRS)	1		87	515139488-00/8	ROD STEERING	1	
38	515756006-00/0	NUT	1		88	515213278-00/2	SPINDLE R/H	1	
39	515137294-00/2	GUIDE ARM	1		89	515202597-00/8	WHEEL COMPLETE REAR	2	
40	515796004-00/7	WASHER	2		90	515116036-00/2	WASHER	2	
41	515700060-00/4	SCREW	1		91	515763006-00/1	NUT	1	
42	515768013-00/2	WASHER BASE	2		92	515135280-00/3	STEERING RACK	1	
43	515700835-00/9	SCREW	1		93	515139755-00/0	WASHER	2	
44	515137379-00/1	U BOLT	1		94	515139773-00/3	GUIDE ARM	1	
45	515202107-00/6	THROTTLE CONTROL (DR)	1		95	515701620-00/4	SCREW	1	
46	515202108-00/4	THROTTLE CONTROL (DRS)	1		96	515701820-00/0	SCREW	2	
47	515139259-00/3	SHIM	1		97	515211488-00/9	STEERING RACK ASSY	1	
48	515104658-00/7	COWL	1		98	515701020-00/7	SCREW	5	
49	515147051-00/4	PEDAL PLATE	1		99	515213279-00/0	SPINDLE L/H	1	
50	515137328-00/8	LINKAGE	1		100	515139489-00/6	BRACKET	1	

*KEY NOS 81 CHASSIS, 115, 116 SUSPENSION ARMS, 156 CHASSIS CUTTING UNIT.
THESE ITEMS ARE NO LONGER AVAILABLE AS A SPARES ITEM.

Flymo

DR 9647352
DRS 9647353



Flymo**DR 9647352**
DRS 9647353

KEY No.	PART No.	DESCRIPTION	QUANTITY	COMMENTS/ APPLICATION	KEY No.	PART No.	DESCRIPTION	QUANTITY	COMMENTS/ APPLICATION
101	515139775-00/8	BRACKET	1		148	515105363-00/3	SPACER	1	
102	515763012-00/9	NUT	1		149	515796016-00/1	WASHER	1	
103	515135156-00/5	BELT GUIDE	2		150	515105364-00/1	SPACER	1	
104	515105309-00/6	SPACER	2		151	515140312-00/7	DEFLECTOR	1	
105	515212912-00/7	TENSIONER	1		152	515213198-00/2	ADJUSTER BAR HOC	1	
106	515700045-00/5	SCREW	1		153	515118208-00/5	SPRING	1	
107	515772012-00/8	WASHER SPRING	1		154	515107129-00/6	AXLE	1	
108	515118143-00/4	WASHER CUP	1		155	515149003-00/3	ROLLER	1	
109	515796001-00/3	WASHER	1		157	515117001-00/5	KEY WOODRUFF	2	
110	515700055-00/4	BOLT	1		158	515107123-00/9	AXLE	1	
111	515135156-00/5	BELT GUIDE	1		159	515212515-00/8	BEARING	1	
112	515213534-00/8	BRAKE LEVER COMPLETE	1		160	515107124-00/7	BLADE ADAPTOR	1	
113	515213115-00/6	TENSION ARM	1		161	515118413-00/1	BLADE 66 CM	1	
114	515796017-00/9	WASHER	2		162	515796001-00/3	WASHER	1	
117	515120082-00/0	BOLT	2						
118	515117018-00/9	KEY	1						
119	515213290-00/7	PULLEY	1						
120	515112016-00/8	BELT	1						
121	515739812-00/3	SCREW	2						
122	515123928-00/1	SCREW	1						
123	515123933-00/1	SCREW	1						
124	515112021-00/8	BELT	1						
125	515117011-00/4	KEY WOODRUFF	2						
126	515213618-00/9	PULLEY	1						
127	515772006-00/0	WASHER SPRING	2						
128	515756006-00/0	NUT	2						
129	515700855-00/7	SCREW	5						
130	515105630-00/5	SPACER	1						
131	515110065-00/7	PULLEY CAST IRON	1	SPECIAL ORDER					
131A	515213635-00/3	PULLEY	1	NLA USE 515110065-00/7					
132	515105248-00/6	SPACER	1						
133	515213479-00/6	FASTENING	1						
134	515212514-00/1	BEARING	1						
135	515763010-00/3	NUT	2						
136	515138963-00/1	BRACKET ROTOR	1						
137	515118258-00/0	SPRING	1						
138	515701610-00/5	SCREW	1						
139	515138966-00/4	BRACKET	1						
140	515796016-00/1	WASHER	2						
141	515213087-00/7	HOOK	1						
142	515213201-00/4	INDEX PLATE	1						
143	515137262-00/9	CONTROL ARM	1						
144	515104215-00/6	KNOB	1						
145	515701830-00/9	SCREW	3						
146	515139420-00/1	PAWL	1						

PRODUCT VARIANT

DR
9647352-01 GBDRS
9647352-01 GB*KEY NOS 81 CHASSIS, 115, 116 SUSPENSION ARMS, 156 CHASSIS CUTTING UNIT.
THESE ITEMS ARE NO LONGER AVAILABLE AS A SPARES ITEM.